



Rescue Solutions International Inc.
 708 SW Umatilla Ave.
 Redmond, OR 97756, USA
 Phone: 541-504-9300 • Fax: 541-504-9301
 info@resqmax.com / www.resqmax.com



Kit 421 - ResQmax Mining Kit



Description

The ResQmax Kit 421 is an Open Pit Mining Line Deployment Kit supplied with two payloads and all the accessories required to operate the ResQmax.

The Spectra Line is a strong messenger line with a test strength of 1500 lbs / 680 kg which allows for long range horizontal deployment. This line can be used to tow stronger ropes or equipment to different locations on the walls of open-pit mines or other environments where the projectile will often make contact with a hard surface.

The Streamline Training Projectile has a high density urethane cover that absorbs the shock of impact with a hard surface and reduces the projectile 'bounce'. The Projectile is also equipped with a Stainless Steel Nozzle Protector to increase the ruggedness.

The ResQmax Streamline Filler Hose facilitates charging the Projectiles with compressed air from an Air Compressor, an SCBA Tank, or a SCUBA Tank. The service pressure of these Training Projectiles is 3,000 psi / 207 bar.

This kit comes complete with spares and a Kit Carry Bag. Optional accessories include the ResQmax Tool Kit and a Rigid Transport/Storage Case. Additional projectiles and lines are available with all of the ResQmax Kits.

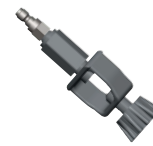
Shipping Dimensions: 25 x 21 x 14" - 26 lbs

Filler Hose Adapter Options

Below are the adapters available with the Filler Hose Assembly. Please select from the following choices:



SCBA Adapter
(American Standard)
Part #: 9111-S



SCUBA Adapter
Part #: 9121-S



SCBA-DIN Adapter
(European Standard)
Part #: 9131-S



SCBA Compressor Adapter
Part #: 9151-S



SCUBA Compressor Adapter
Part #: 9171-S



SCBA-DIN Compressor Adapter
Part #: 9161-S

KIT CONTENTS:

- | | |
|--------------------|---|
| 1 - Part #500 | ResQmax Launcher - Red |
| 2 - Part #305-S-SS | Streamline Industrial Projectile (Red Cover) |
| 2 - Part #803 | 1500lb Test 4mm Spectra Line (500ft / 152m) in Compact Line Container |
| 1 - Part #714 | O-ring Kit - 10-pack (various) |
| 1 - Part #715 | Corrosion Block |
| 1 - Part #720 | ResQmax Operations Manual |
| 1 - Part #725 | ResQmax Training CD |
| 1 - <i>Select</i> | Streamline Filler Hose (<i>see options above</i>) |
| 1 - Part #907 | Cordura Kit Carry Bag - Red |